




On NICUs, C-Sections, and the “39-Week Rule” – Seton’s Perinatal Safety Journey

Frank Mazza, MD
March 30th, 2012



“No one is so brave that he is not disturbed by something unexpected.”

Julius Caesar

Seton Healthcare Family

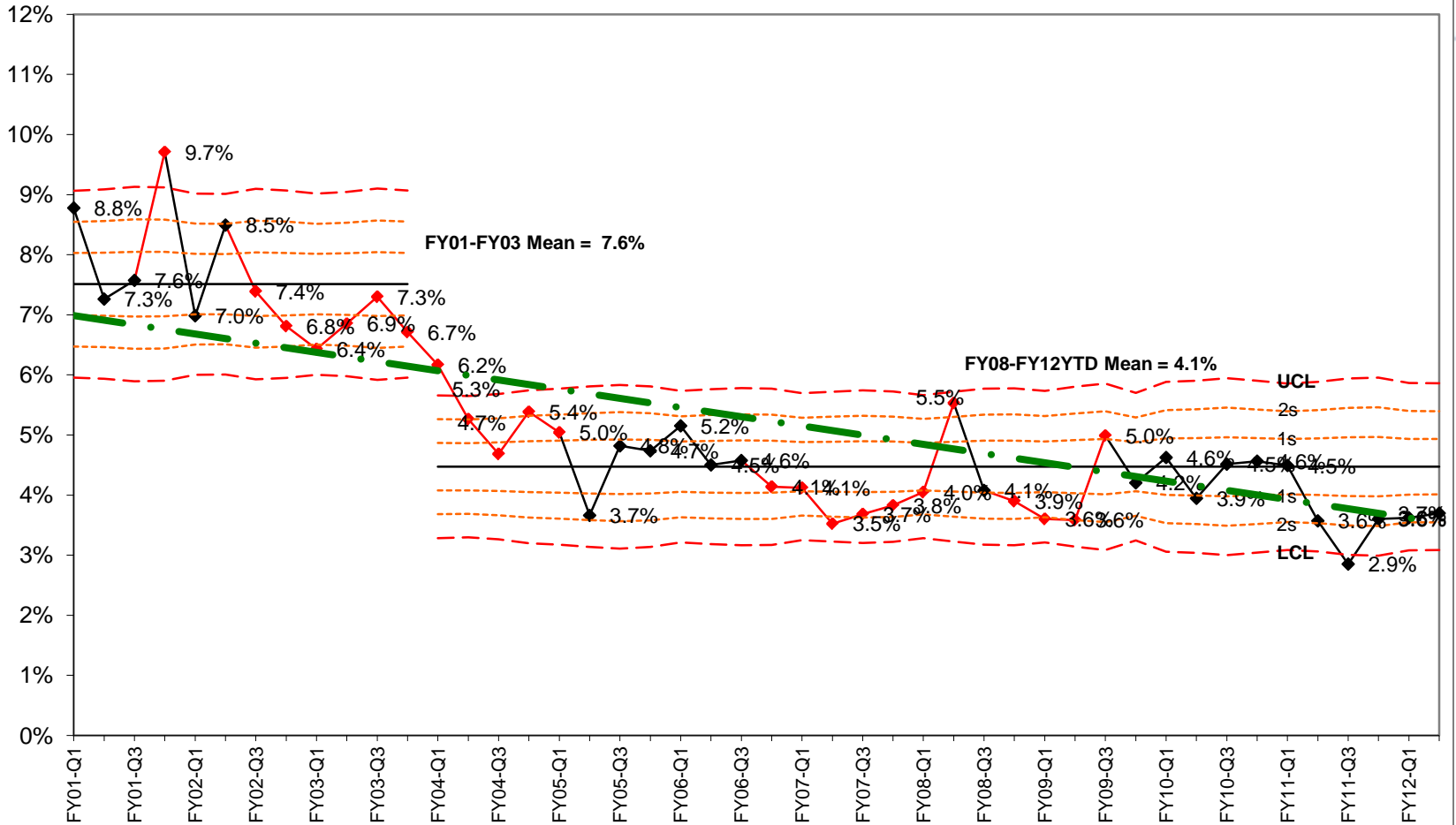
- 11 hospital system based in Austin, TX
- Unit of Ascension Health

SHF Perinatal Safety Program

- Started as a result of a bad outcome
- One of Ascension's "Priorities for Action"
- A number of new transformational best practices introduced (e.g., use of assisted devices, the "39 week rule," use of high fidelity simulation for teamwork training, joint physician / midwife / RN fetal heart monitoring strip review, introduction of the 'Oxytocin Bundle" (with IHI), etc...
- National and International Recognition

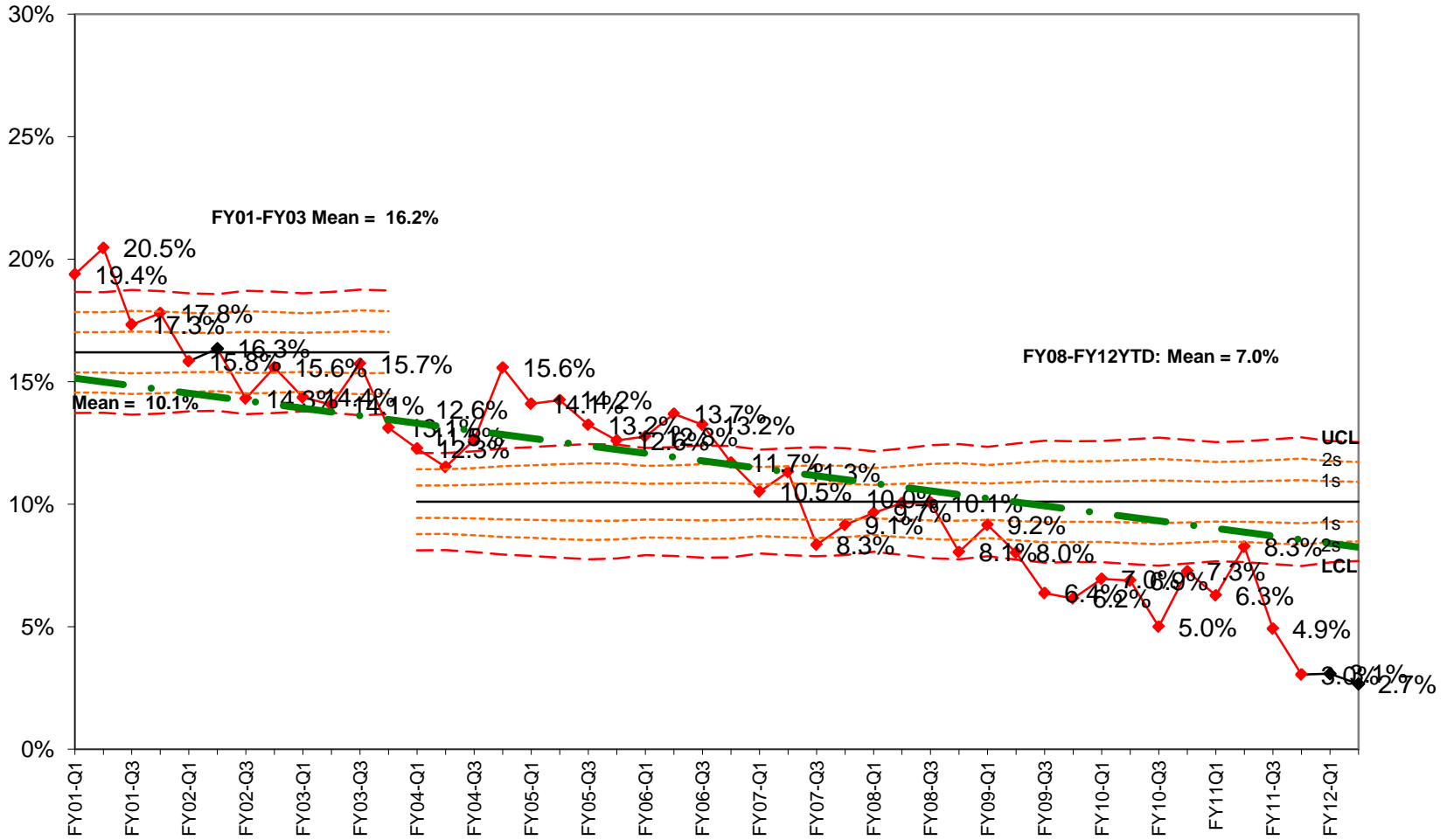


Instrumented Delivery Rate Seton Family of Hospitals 7/1/2000--12/31/2011 (den: total deliveries)



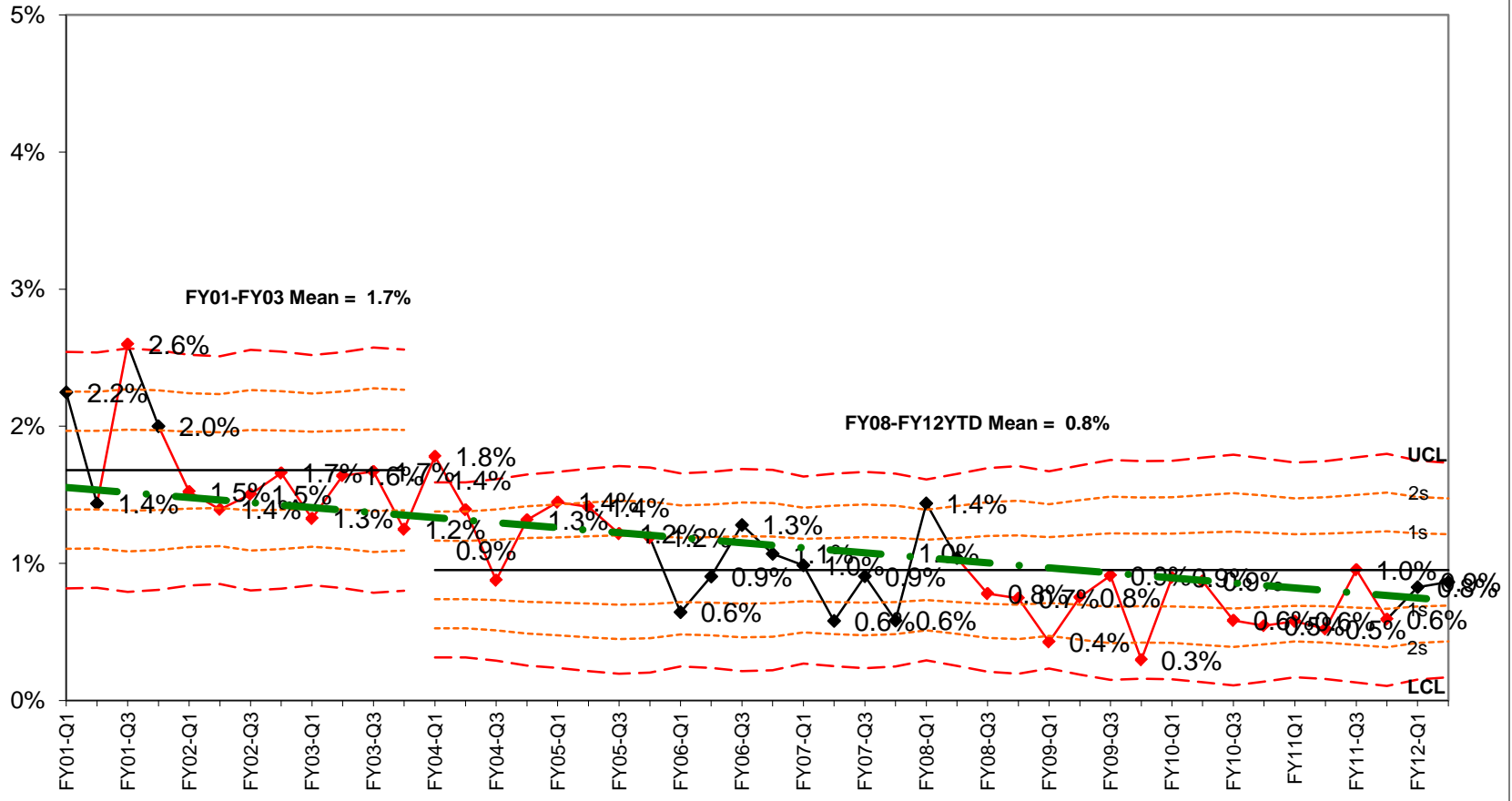


Episiotomy Rate Seton Healthcare Family 7/1/2000--12/31/2011 (episiotomy/ total vaginal deliveries)



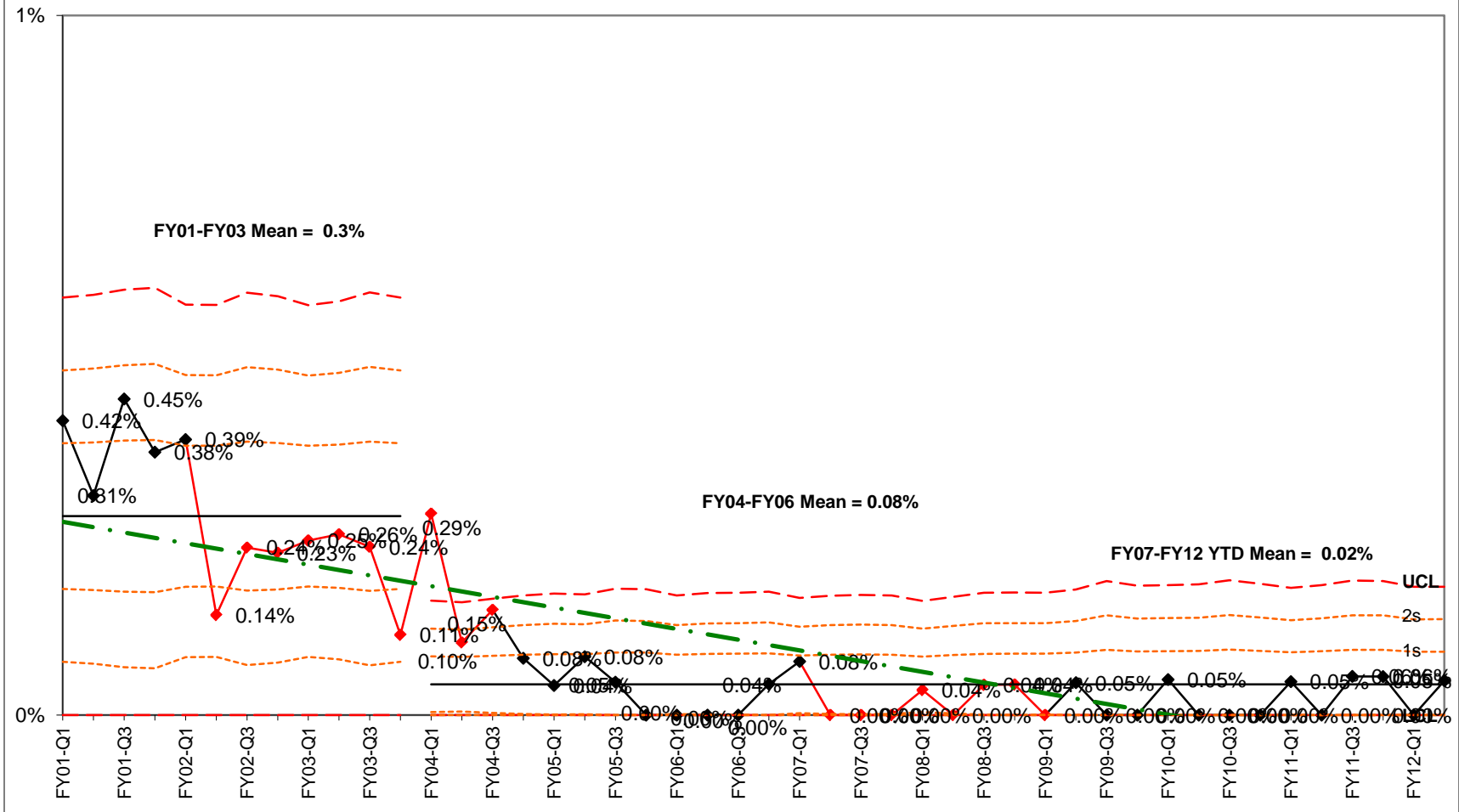


4th Degree Laceration Rate Seton Healthcare Family 7/1/2000--12/31/2011 (4th Degree Lacerations / total vaginal deliveries)



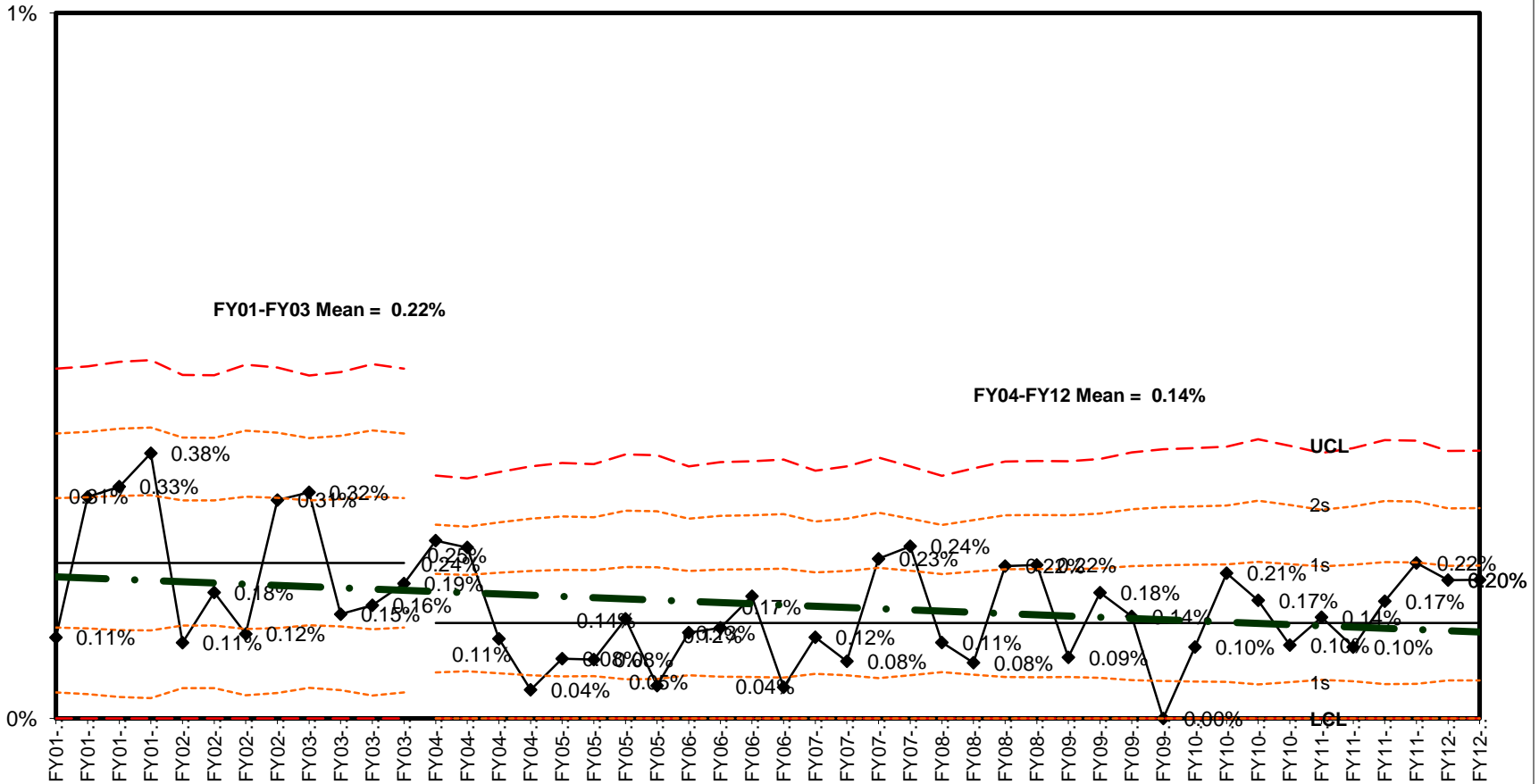


Birth Trauma Rate Seton Healthcare Family 7/1/2000--12/31/2011 (birth injuries / total newborns)



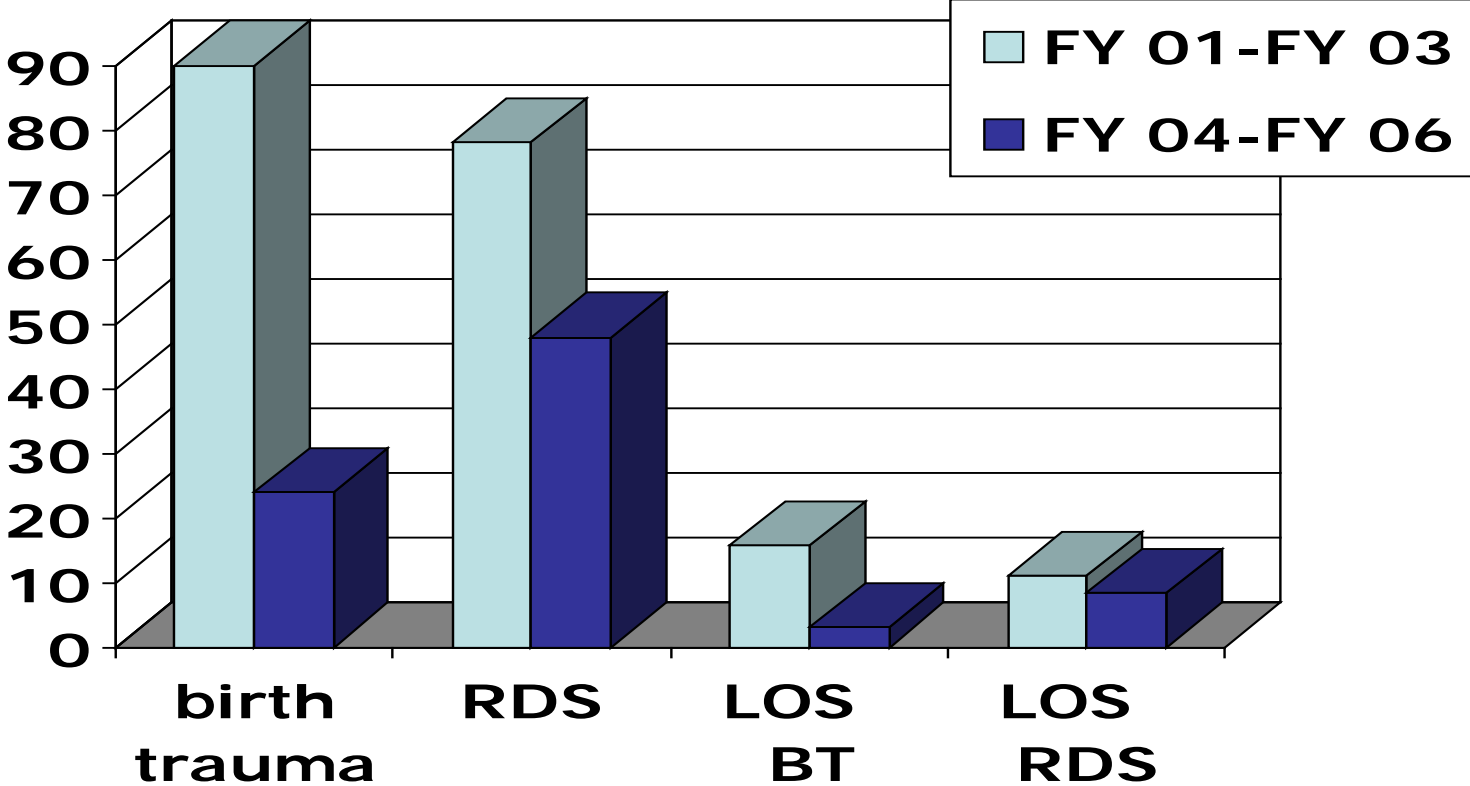


Seton Family of Hospitals Iatrogenic Prematurity Rate (RDS & TTN for 37-38 Weeks GA w/ NICU Admissions) 7/1/2000--12/31/2011





Effect of Reduced Iatrogenic Prematurity



Effect of Reduced Iatrogenic Prematurity



Seton Family of Hospitals	FY01-FY03 Number of Cases	AVG LOS (Days)		FY04-FY06 Number of Cases	AVG LOS (Days)
Birth Trauma	90	15.8		24	3.1
RDS & TTN (37-38 wks)	78	11.1		48	8.5

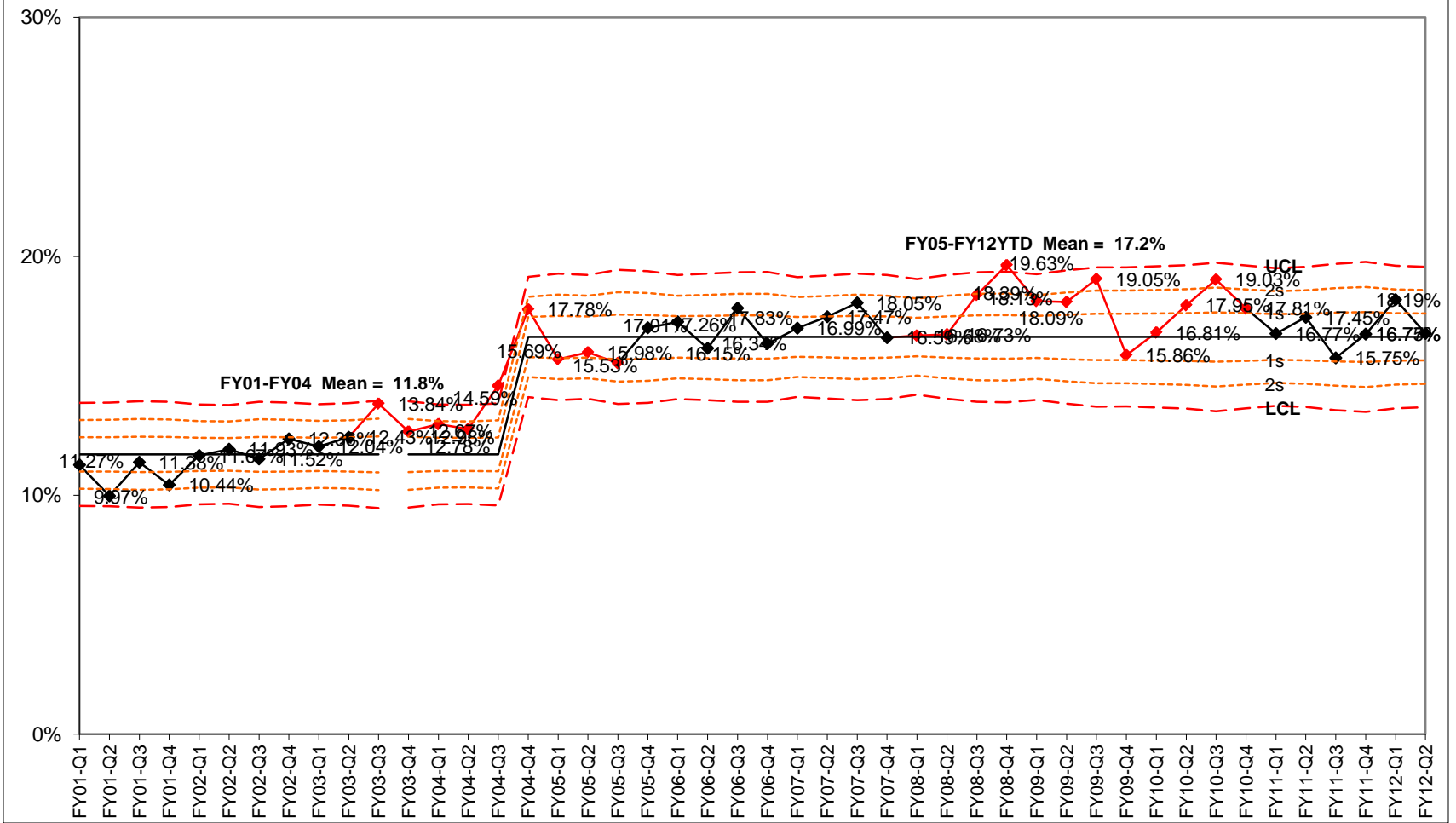
Costs – Newborns with Birth Trauma



Year	Average Number of Cases	Payment to Seton (per year)	Cost to Seton (per year)	Average Net Income (per case)	Total Net Income (per year)
FY01-03	30.3	\$ 796,724	\$563,843	\$7,677	\$232,619
FY05-07	4.0	\$23,993	\$23,045	\$118	\$472
FY08-09	2.0	\$17,783	\$13,004	\$1,195	\$2390
FY10	1.0	\$9,974	\$9,072	\$902	\$902



**Primary C-Section Rate
Seton Healthcare Family
7/1/2000--12/31/2011
(By TJC Perinatal Core Measures Specifications)**



Some of our conclusions...

- Most birth trauma is actually preventable

Some of our conclusions...

- Most birth trauma is actually preventable
- Implementation of the '39 week rule' is a terrific strategy for destroying your margins in the NICU...

Some of our conclusions...

- Most birth trauma is actually preventable
- Implementation of the '39 week rule' is a terrific strategy for destroying your margins in the NICU... though, of course, it is still the right thing to do

Some of our conclusions...

- Most birth trauma is actually preventable
- Implementation of the '39 week rule' is a terrific strategy for destroying your margins in the NICU... though, of course, it is still the right thing to do
- There is nothing better than good outcomes data in helping to motivate health care workers to do the right thing

Some of our conclusions...

- Most birth trauma is actually preventable
- Implementation of the '39 week rule' is a terrific strategy for destroying your margins in the NICU... though, of course, it is still the right thing to do
- There is nothing better than good outcomes data in helping to motivate health care workers to do the right thing
- Rising c-section rates aren't an inevitable consequence of best practice L&D care



“Men are nearly always willing to believe what they wish.”

Julius Caesar

Thank you!

Frank Mazza, MD

VP / Chief Patient Safety Officer / Associate Chief Medical
Officer

Seton Healthcare Family

fmazza@seton.org